

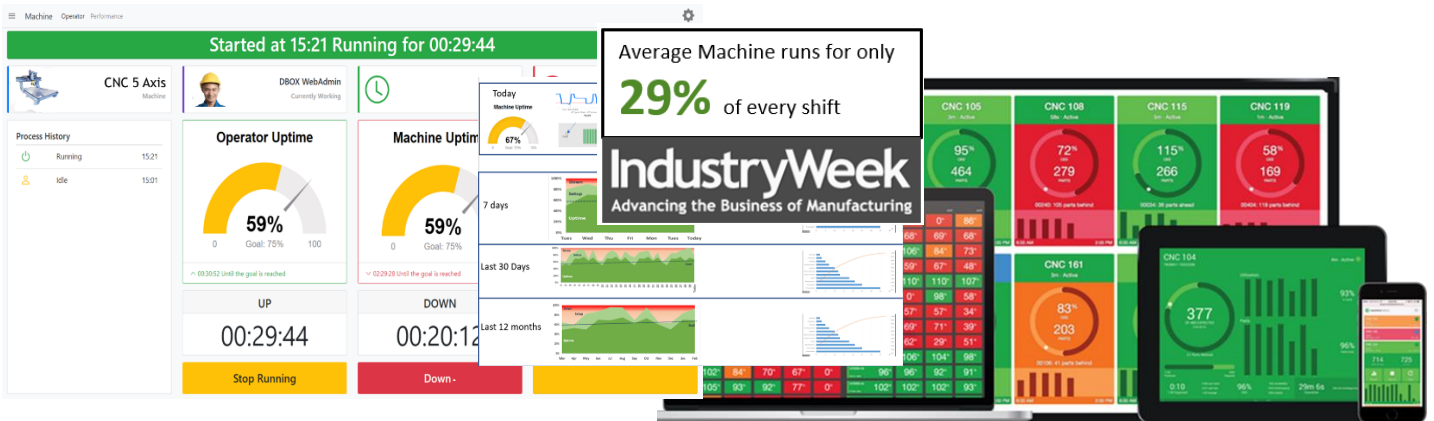
# “Quick Start” IoT Program

## What is the “Quick Start” IoT Program?

SME manufacturers have identified that there is a shortage of skilled employees to implement IoT and Industry 4.0 technology adoption. The “Quick Start” IoT program is a budget-friendly way to rapidly start your IoT initiative. It provides a winning combination of proven technology, Government funding, trained students, and a community of manufacturers. This program is a work-integrated learning program that delivers an IoT platform for your manufacturing business to improve productivity.

The “Quick Start” IoT platform helps you eliminate bottlenecks and empower workers with real-time machine connectivity, visual dashboards, and predictive alerts.

## Shop Floor Productivity & The Factory of the Future



**Connect:** Quickly connect existing machines to the cloud and start collecting objective data.

**Analyze:** Accurate real-time data-helps you prevent problems.

**Take Action:** Publish alerts and notifications to the right person at the right time to improve productivity.

**No Manual Data Entry:** This is time consuming and prone to error. Automatically collect the truth.

**Simplified Performance Reporting:** Eliminate delay, cleaning, key punching and compiling data from multiple sources. Get all the data you need in a single dashboard available on any device.

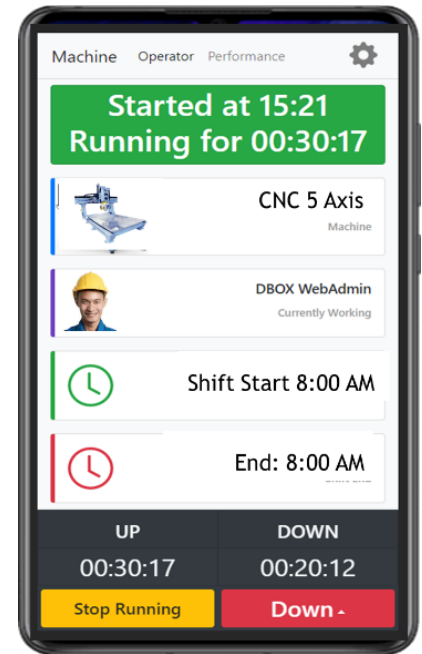
**Data-Driven Shop Floor Culture:** A data-driven digital culture is a key factor in beating the competition. Engage everyone on the floor for continuous improvement across your entire company.

## What is the Value Proposition for Manufacturers?

- View what's taking place on the shop floor in real time!
- Easily identify operational efficiency issues
- Improve shop floor productivity
- Painless way to leverage technology to grow your business
- Employers can qualify for up to a **70% wage subsidy** from ICTC
- Students can train your team on applying IoT to the shop floor
- Attract and evaluate potential employees, plus keep great talent
- Help young people launch their career
- Participate in the IoT employer community to share experiences

## Who can participate?

Every manufacturer can and should embrace IoT technology to remain competitive. To be eligible for ICTC funding, employers must be a Canadian manufacturing company, and with more than 10 employees.



IoT Mobile App

## Getting Started is Easy!

1. Email Laura Koops [lkoops@mttechhub.ca](mailto:lkoops@mttechhub.ca) and we'll set up a short introductory call to explain the program details, commitments, costs, and funding assistance.
2. If you elect to proceed with a co-op student, we can assist you to identify and offer a placement to a qualified student of your choice.
3. You fill in a short application form for ICTC funding.
4. We'll send you the "Quick Start" IoT kit with some easy homework before the student starts.

## About the Program Partners

### MTechHub

North America's first Industry 4.0 Innovation Center. We are a nonprofit industry cluster with 280 manufacturing members. We work with you to solve your digital challenges using a standardized Industry 4.0 technology platform.

3517 Mainway,  
Burlington, ON L7M 1A9  
Email: [info@mttechhub.ca](mailto:info@mttechhub.ca)  
[www.MTechHub.ca](http://www.MTechHub.ca)

### ICTC

The Information and Communications Technology Council (ICTC) is a not-for-profit national centre of expertise for the digital economy. ICTC is the trusted source for creative capacity building programs for the digital economy.

116 Lisgar Street, Suite 300  
Ottawa, ON  
K2P 0C2  
Email: [a.chiasson@ictc-ctic.ca](mailto:a.chiasson@ictc-ctic.ca)  
[www.ictc-ctic.ca](http://www.ictc-ctic.ca)